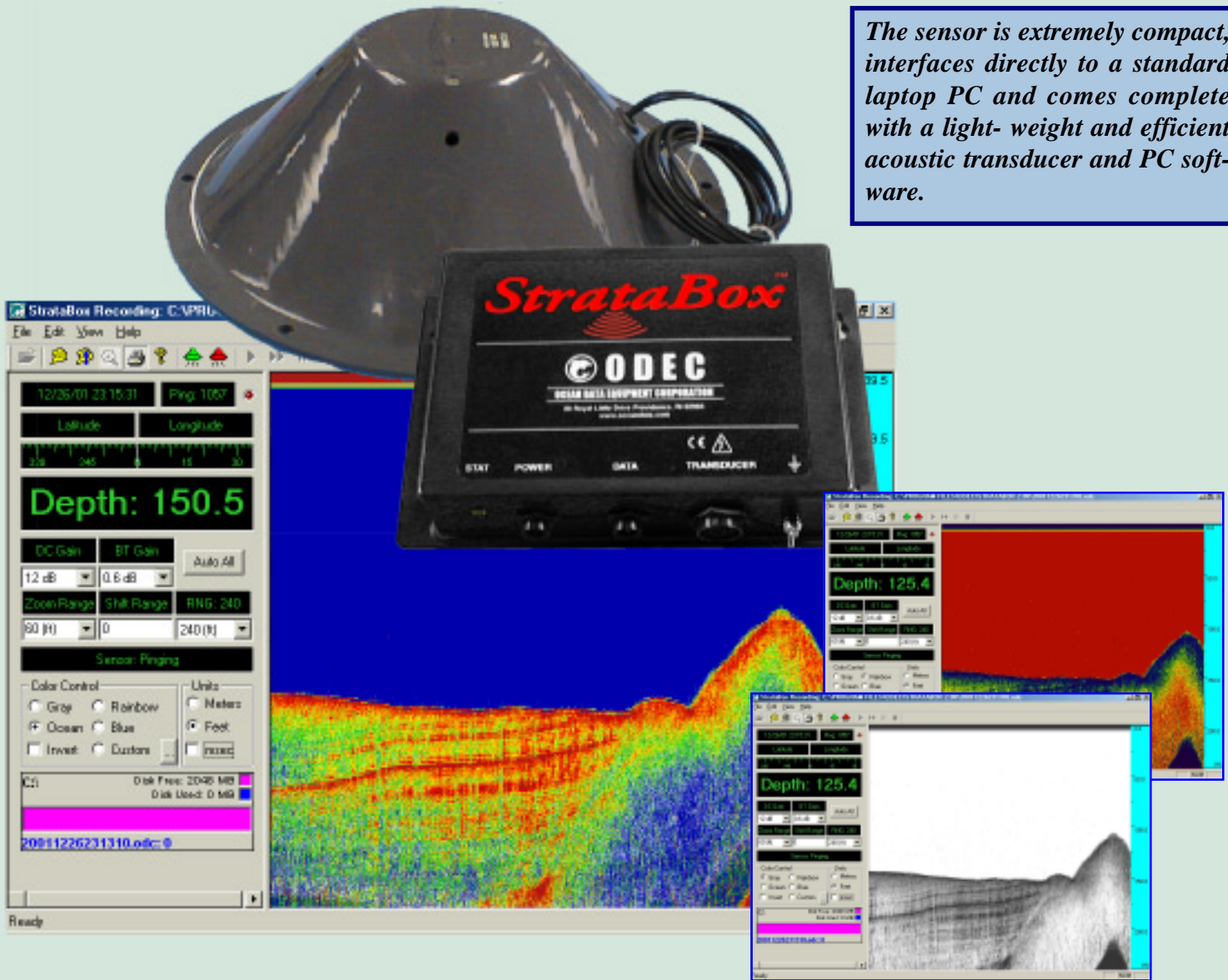


# StrataBox™

## Marine Geophysical Instrument

The StrataBox™ is a portable high- resolution marine sediment imaging instrument capable of delivering 6 cm of marine sediment strata resolution with bottom penetration of up to 40 meters. It is designed exclusively for inshore and coastal geophysical marine survey up to 150 meters of water depth.

*The sensor is extremely compact, interfaces directly to a standard laptop PC and comes complete with a light- weight and efficient acoustic transducer and PC software.*



*Extreme ease of use, portability, and cost efficiency make this device a perfect choice for shallow water marine geophysical applications*

### FEATURES

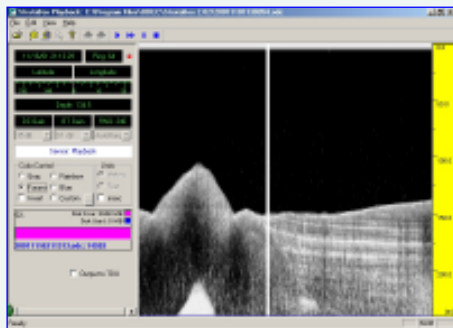
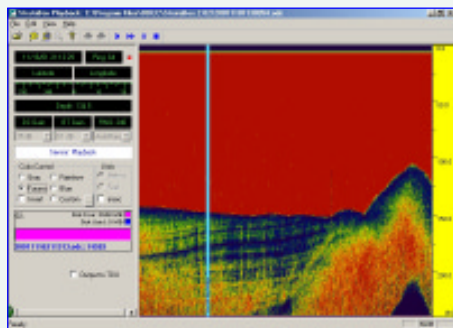
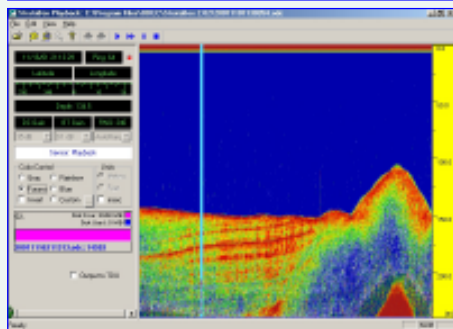
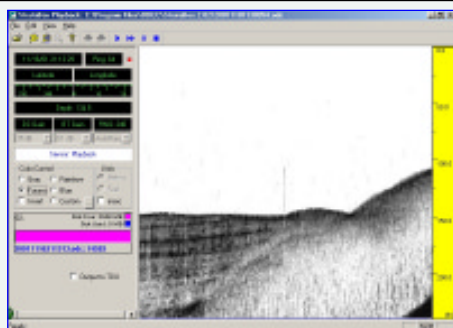
- ◆ Strata Resolution: 6 cm with up to 40 meters bottom penetration.
- ◆ Depth Accuracy:  $\pm 0.5\%$
- ◆ Geographic Position Input, NMEA Compatible
- ◆ Hypack & HydroPro Compatible
- ◆ Data Storage & Playback
- ◆ Zoom Modes
- ◆ Event Marks
- ◆ Low Input Power

 OCEAN DATA EQUIPMENT CORPORATION

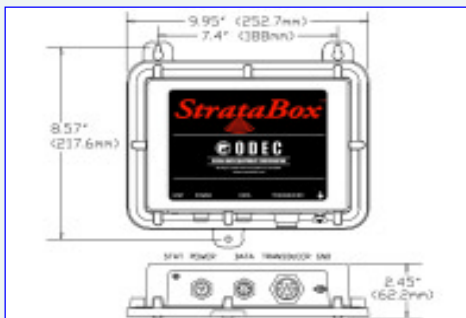
[www.oceandata.com](http://www.oceandata.com)

# SPECIFICATIONS

## StrataBox - Marine Geophysical Instrument



<b>Units:</b>	Feet or Meters
<b>Depth Ranges:</b>	0-15, 0-30, 0-60, 0-120, 0-240, 0-450 Feet. 0-5, 0-10, 0-20, 0- 40, 0- 80, 0-150 Meters. Millisecond Range-scale available in either Feet or Meters. Auto-ranging Modes in all units.
<b>Shift Range:</b>	0-450 feet in 1 foot increments 0-150 meters in 1 meter increments
<b>Zoom Range:</b>	15, 30, 60, 120, 240 feet 5, 10, 20, 40, 80 meters
<b>Zoom Modes:</b>	Bottom Zoom, Bottom Lock, Marker Zoom, GUI Zoom (Playback Only)
<b>Display:</b>	Normal Data, Zoom Data, Navigation, Depth, Command/Status Color Control for Data: 4 selections or Custom (User Input), Data Invert possible.
<b>Strata Resolution:</b>	6 cm with up to 40 Meters bottom penetration.
<b>Depth Resolution:</b>	0.1 foot, 0.1 meters.
<b>Depth Accuracy:</b>	±0.5%
<b>Speed of Sound:</b>	1500 Meters/Second or 4800 Feet/Second.
<b>Navigation Input:</b>	NMEA 0183, GLL, GGA, RMC, VTG, VHW, HDT. Selectable Baud Rate, RS-232 COM2.
<b>StrataBox Interface:</b>	Serial data, 57.6Kbaud, RS-422, COM1.
<b>Printer Output:</b>	Centronics (Parallel Port) interface to TDU Series Thermal Printers.
<b>Shallow Water Operation:</b>	< 2.5 meters; bottom type dependant
<b>Transmit Rate:</b>	Up to 10 Hz, depth and operator mode dependent.
<b>Event Marks:</b>	Manual or Periodic (selectable in 1 minute intervals)
<b>Data File Storage:</b>	Saves Depth, Navigation, and Graphic Data in ODEC format (Proprietary). Normal Data and Zoom Data stored is Pixel Data and can be played back and printed.
<b>Data File Playback:</b>	Files played back and printed at Normal or Rapid Advance Speed, with Pause and GUI Zoom available.
<b>Frequency Output:</b>	10 Khz.
<b>Transmit Output Power:</b>	300 Watts (Pulsed), 1000 Watts capable.
<b>Input Power:</b>	10-30 Volts DC, Nominal Power 8 watts, Reverse Polarity and Over Voltage Protected.
<b>Dimensions:</b>	25.4 cm (10") Length, 15.876 cm (6.25") Width, and 6.25 cm ( 2.5") Height.
<b>Weight:</b>	0.9 kg (2.0 lbs).
<b>Environmental:</b>	-25°C to +60°C Operating Temperature (-55°C to +90°C Storage) Water Resistant to EN60529 IP65 EMC meets EN60945 Emissions, CE Compliant



All specifications subject to change without notice.

sm081302



### OCEAN DATA EQUIPMENT CORPORATION

88 Royal Little Drive Providence RI 02904 USA  
Tel: (401) 454-1810 Fax: (401) 454-1806  
E-mail: sales@oceandata.com Web Site: <http://www.oceandata.com>